



NO MORE CARDS/TAGS, ELIMINATE BUDDY PUNCHING

- Uses fool proof face recognition technology to instantly identify employees.
- Eliminates “buddy punching” and the need for cards and badges.
- Uses a standard Ethernet connection to your existing computer network.
- Does not require a badge in identification mode or can be used with a pin number or proximity badge for employee verification.
- Includes a built-in dry contact relay for optional physical access control.
- Eliminates manually generated time card data.
- Costs less than other biometric timekeeping products.
- Alphanumeric Keypad.
- Accept/Reject Tones.
- Integrated Proximity Reader.
- Supervisor mode.
- Employee Messaging.
- Dual camera technology provides 3D verification.
- Infrared Led Lights provide operation in low light environments

A touch-free hygienic alternative to fingerprint & hand readers, Time & Access Systems' Facial Recognition Terminal can record employee time, monitor productivity and control access in a multitude of industries including restaurants, hospitals, health care facilities, banks, manufacturing, retail, hospitality, and many others.

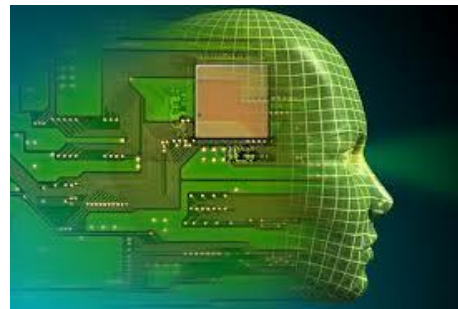
The terminal functions as a simple to use data collection point for employee information. It can be linked to a variety of existing computer networks in your organization to complement the management information systems you already have in place.

By automating your data collection process, you can eliminate the manpower and mistakes associated with conventional time cards, thereby reducing both payroll costs and errors. The terminal is a time and attendance, and access control system, that uses face recognition technology to instantly identify users.

The terminal provides a touch-free, hygienic alternative to fingerprint and hand readers, while still eliminating “buddy punching” and the need for cards or badges. Users simply look at the device and within seconds they are identified and clocked in for work.

FEATURES...

- The terminal uses two infrared cameras that perform three dimensional facial analysis and identification.
- The dual camera system not only provides the fastest and most reliable verification, but it also ensures that it can't be fooled by 2D images or photographs.
- This precision 3D verification system is even accurate enough to differentiate between identical twins.
- Communication between the terminal and your computer is accomplished by one of Time & Access Systems' integrated time and attendance systems.
- The terminal automatically transfers data to your computer. In turn, the computer is used to program the terminal.
- The terminal's high impact plastic construction provides a tough, yet lightweight and attractive look.
- The internal battery provides data backup if power is lost. What kind of data would you like to collect?
- Accurate tracking and reporting of employee time is essential to determining productivity.
- The terminal provides an easy and cost effective means of gathering this type of data.



The Latest Biometric
Technology!

Time & Access Systems PNG
telephone (675) 325 8977

head office PO Box 247 Waigani 131 NCD Papua New Guinea
email info@timeandaccess.com.pg • website www.timeandaccess.com.au

THE BENEFITS

- Eliminates the unavoidable errors associated with manually collected data; Features easy operation
- Provides accurate, reliable data; Is user programmable
- Links directly to your existing computer system
- Offers a variety of options
- Costs less than other Biometric data collection products

SIMPLY LOOK & GO



SYSTEM REQUIREMENTS

Processor 1 GHz or higher

Operating System Microsoft Windows 7, /vista, XP SP2 or later, Server 2003 or 2008 (Standard Enterprise Edition)

Memory 1 GB of RAM or higher

Hard Disk Drive Up to 450 MB free disk space' up to 1 GB if the .NET framework is not installed

Display 1024 x 768 or higher resolution

CD-ROM Drive Required

Printer Any printer compatible with Windows XP SP2 or later

Network Interface Network adaptor configured for TCP/IP connect to a switch on LAN network

SPECIFICATIONS

Imaging System Infrared Dual Cameras

Verification Methods Face Recognition, or PIN & Face Recognition

Verification Speed Less than 1 second

Keypad 4 x 4 Touch Sensitive (Capacitive) Keypad

Display 8.9 cm TFT colour LCD, 65,000 colours, 320 x 240 resolution

Communications Standard TCP/IP, USB Host

Power 12V DC, 1A Transformer: 100-240V 50/60 Hz 0.35A

SPECIFICATIONS Cont...

Environment Light 0-5,000 Lux

Sensor Distance 30 cm – 75 cm

Operating Temperature 0°C - 40°C

Operating Humidity 20% – 80% RH Non-Condensing

Size 18.4cm W x 13.3 cm H x 8.9 cm D

Weight 520 g

Installation Method Wall Mount

Security Alarm Tamper Alarm

HOW IT WORKS

